

# Twenty Two

(Original Date: March 2013)  
(November 2019)

Composition No. 4

Taruma Sakti

**Adagio**

Measures 1-4 of the Adagio section. The music is in 4/4 time with a key signature of five sharps (F#, C#, G#, D#, A#). The melody in the right hand features a series of eighth and quarter notes, while the left hand provides a harmonic accompaniment. The dynamic marking *mp* is present.

**Allegretto**

Measures 5-6 of the Allegretto section. The tempo changes to 12/8. The right hand has a melodic line with dotted rhythms, and the left hand has a steady eighth-note accompaniment. The dynamic marking *mf* is present. Below the staff, there are five musical symbols: a treble clef, a treble clef with a star, a treble clef with a star, a treble clef with a star, and a treble clef with a star.

Measures 7-8 of the Allegretto section. The musical notation continues with the same melodic and accompaniment patterns as the previous measures.

*ped. simile*

Measures 9-10 of the Allegretto section. The musical notation continues with the same melodic and accompaniment patterns as the previous measures.

Measures 11-12 of the Allegretto section. The musical notation continues with the same melodic and accompaniment patterns as the previous measures.

14 *rit.*

Ped. \* Ped. \*

16

Ped. \* Ped. \* Ped. \*

19 **Andante moderato**  
8

*mp* *mf*  
Ped. \* Ped. \*

22 8

*mp*  
Ped. \* Ped. \*

24 8

*mf*  
Ped. \* Ped. \*

26 *rit.* 8

*rit.* 8

26 27

*rit.* \* *rit.* \* *rit.* \* *rit.* \*

28 8

28 29

*rit.* \* *rit.* \* *rit.* \* *rit.* \* *rit.* \*

**Larghetto**

31 15 8

**Larghetto**

31 32 33 34

*p* *rit.* \* *rit.* \*

35 **Andante**

*p.*  
*with pedal*

37

39

41

43

45

47

49

51

*rit.*

53

*a tempo*

55

8

57

*rit.*

8

59 8

Measures 59-61. Measure 59 starts with a piano (p) dynamic. Measures 60-61 are marked with a forte (f) dynamic. The key signature has one flat (B-flat). The music features a melodic line in the right hand and a supporting bass line in the left hand.

62 **Allegro** 8 *rit.*

Measures 62-64. Measure 62 starts with a piano (p) dynamic. Measures 63-64 are marked with a forte (f) dynamic. The tempo is marked **Allegro**. A *rit.* (ritardando) marking is present above measure 63. The key signature has one flat (B-flat). The music features a melodic line in the right hand and a supporting bass line in the left hand.

65

Measures 65-67. Measure 65 starts with a piano (p) dynamic. Measures 66-67 are marked with a forte (f) dynamic. The key signature has one flat (B-flat). The music features a melodic line in the right hand and a supporting bass line in the left hand.

67 **Allegro**

67 *mp*

71

76

80

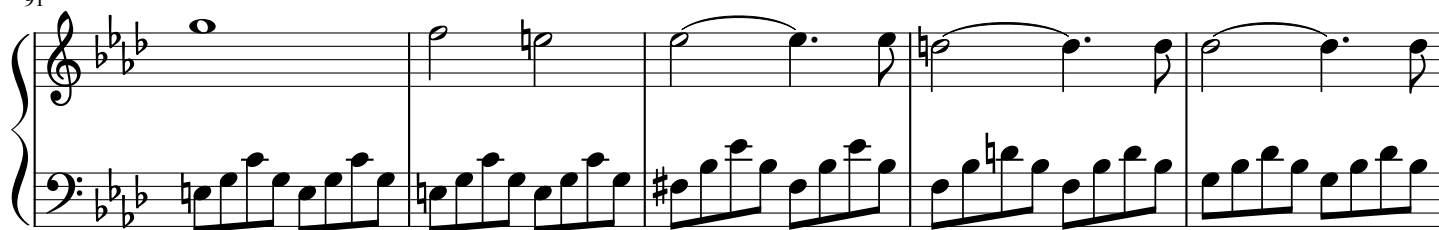
83

1.

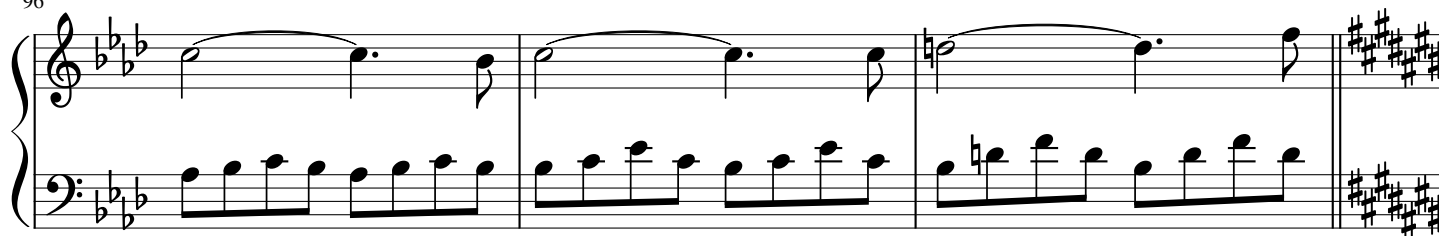
87

2.

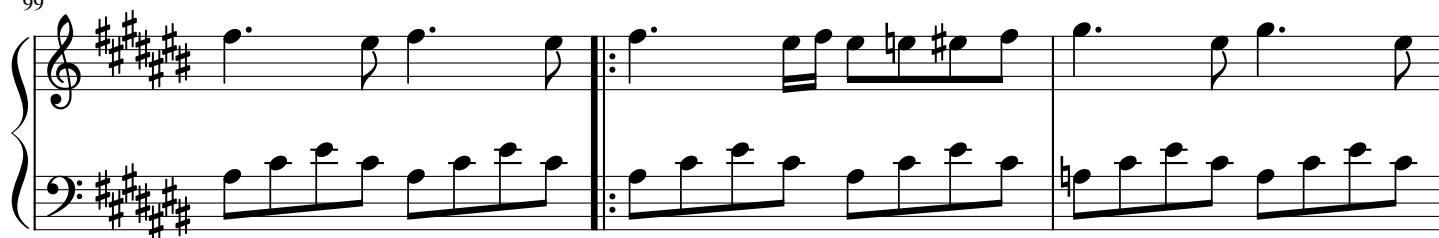
91



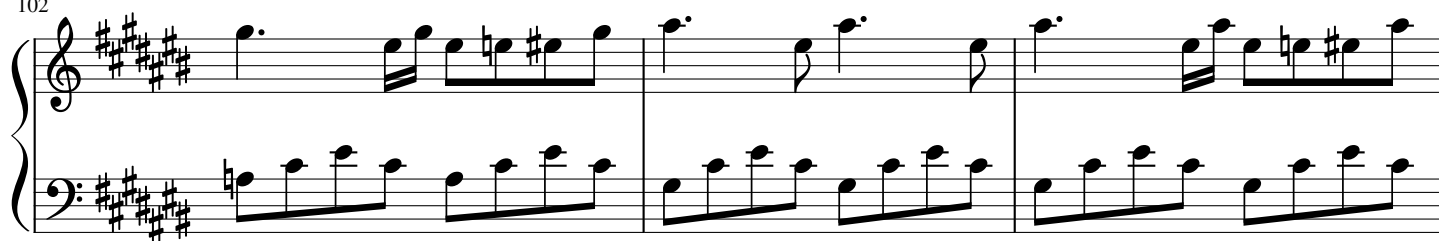
96



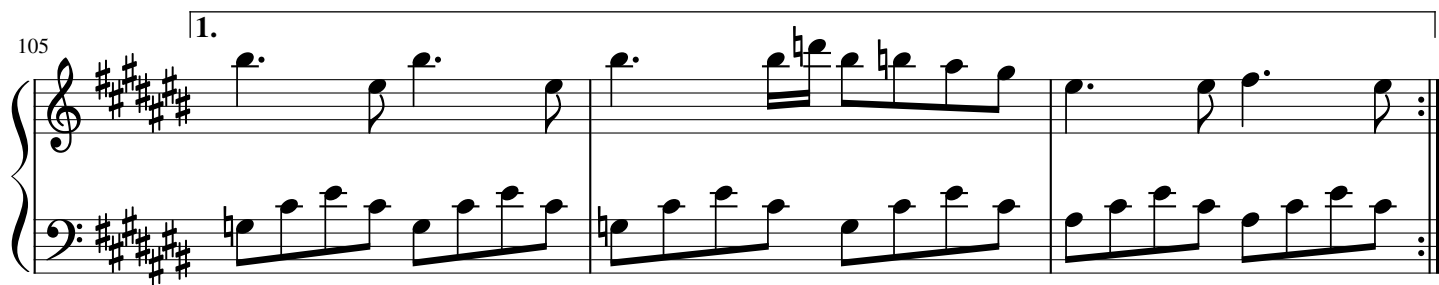
99



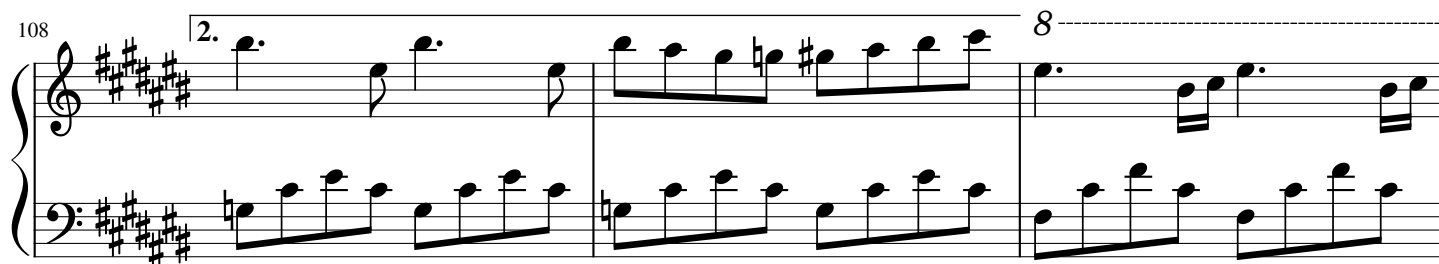
102



105



108





111 8

114 8

118

123

128

132

136 8

140

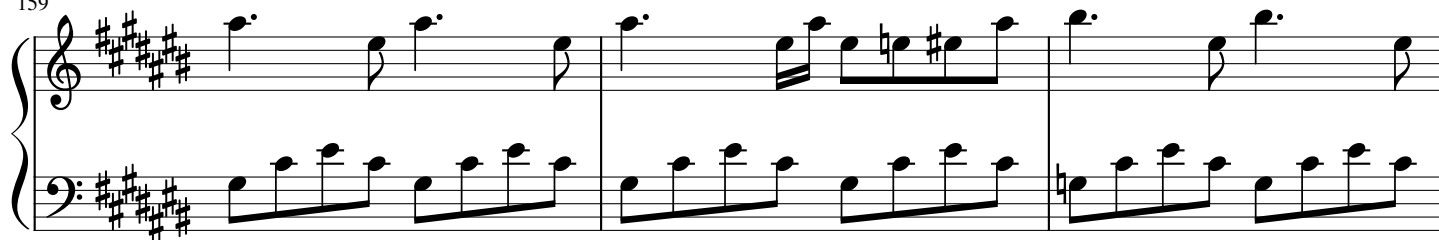
142

146 *precipitando*

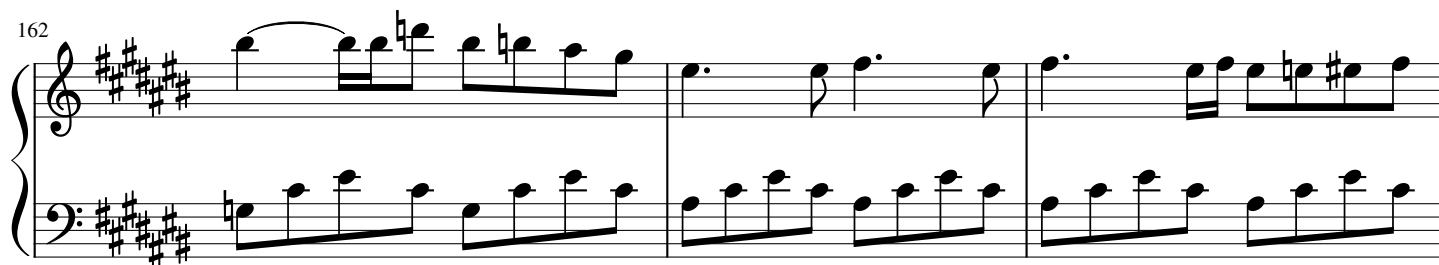
151 *moderato*

155 **Allegro**

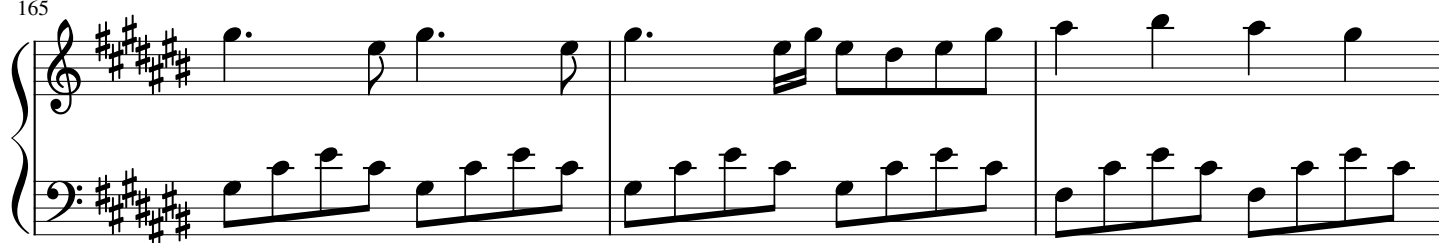
159



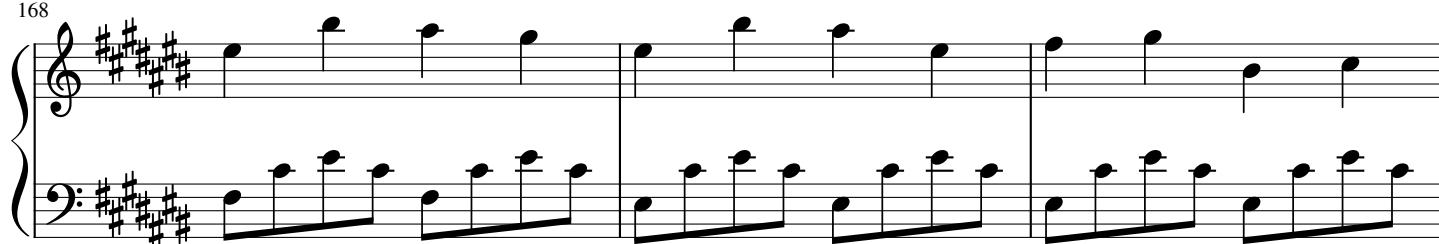
162



165



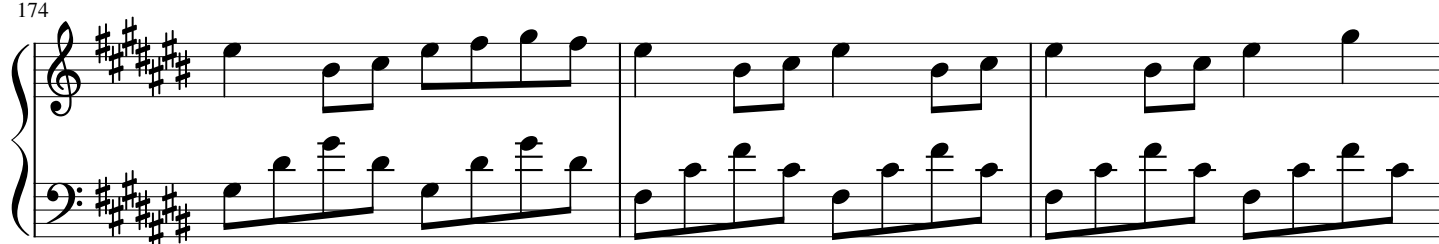
168



171



174



177

Measures 177-179 of a musical score in E major (four sharps). The treble clef staff contains eighth-note and quarter-note patterns, while the bass clef staff features a steady eighth-note accompaniment. Measure 179 concludes with a fermata over a whole note in the treble and a whole rest in the bass.

180

Measures 180-182 of the musical score. Measure 180 begins with a half rest in the bass and a half note in the treble. Measure 181 continues with eighth-note patterns in both staves. Measure 182 ends with a fermata over a whole note in the treble and a whole note in the bass, followed by a double bar line.